

The  
**Horseman's Herald**



Dakota Boland competing in the 10-13 Polo Turn

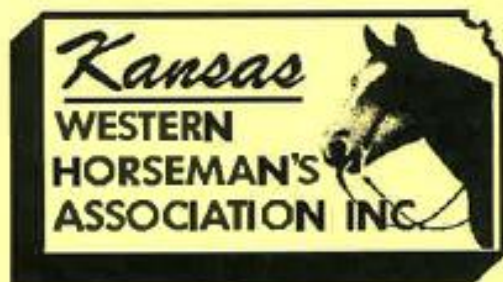
The Horseman's Herald  
404 Morgan Ave  
Downs, Ks 67437

**\$2.50**

Volume 48, No. 5

June 2012

**Official Publication of the  
Kansas Western Horseman's Assoc. Inc.**



THE HORSEMAN'S HERALD, INC  
(USPS 928-260)  
Official Publication of the  
KANSAS WESTERN HORSEMAN'S ASSN., INC  
The Horseman's Herald is published Feb.-Sept. yearly at  
404 Morgan Ave, Downs, KS 67437.

EDITOR-TONYA KUHN  
404 Morgan Ave  
Downs, KS 67437  
785-454-6043  
e-mail: tkuhn@uraltel.net

POINTS RECORDER  
Penny Vargas  
899 E. 90th Ave N  
Belle Plaine, KS 67013  
620-488-3859

SUBSCRIPTION RATE: \$15.00 per year (eight issues)  
\$25.00 for two years. Single copy \$2.50 (includes  
Kansas Sales Tax). Deadline for subscribers to receive  
current issue is the 15th of the month previous to publication.

Postmaster, send change of address to HORSEMAN'S  
HERALD, 404 MORGAN AVE, DOWNS, KS 67437.

All correspondence on subscription to be sent to:  
Tonya Kuhn, 404 Morgan Ave, Downs, KS 67437.

Advertising Rates-	For 1 Issue	For 2 or More Issues
Full page.....	\$35.00	\$31.50
One-half page.....	\$25.00	\$22.50
One-fourth page.....	\$20.00	\$18.00
One-eighth page.....	\$15.00	\$13.50
Color Ad or Ad with Photo-add an additional.....	\$10.00	

**BUSINESS CARD DIRECTORY**

\$10.00 per issue-\$70.00 per year

7% Late charges added to accounts 30 days past due.

MAIL ALL KWAH SHOW BILLS FOR APPROVAL TO  
BE PRINTED IN THE HERALD ALONG WITH  
PUBLICATION FEE TO:

KWAH Secretary  
Mitchell Sauer  
13094 140th Ave.  
Collyer, KS 67831  
(H) 785-769-5219  
(C) 785-743-8083

mitchell\_sauer@yahoo.com

Payable to: The Horseman's Herald

Show Bill Publication Fee Per Show Not Per Page:	
One-half page-41 events.....	\$25.00
Full Page, 42 plus events.....	\$35.00

Make all checks payable to:  
THE HORSEMAN'S HERALD

**2012 KWAH CALENDAR OF EVENTS**

**JUNE**

2-3	KWAH Benefit	Bentley/WaKeeney
6-7	CBS	Alton
9	Rockin S	Gorham
10	Rockin S	Gorham
12	Sagebrush	Garden City
13-14	Bull City Rough Riders RD	Alton
14	MKC	Bentley
15-16	Butler County	Leon
15-16	Lane County	Dighton
16-17	WaKeeney SC	WaKeeney
16-17	SVF RD	Phillipsburg
21	Sagebrush	Garden City
23-24	Bit & Spur O-Mok-See	Bentley
28	Garden City Wranglers	Garden City
28-29	Fort Bissell RD	Phillipsburg
30	DGAS	Scott City
29-30	Butler County RD	
30	Rocking S RD	Gorham

**JULY**

1	Rocking S RD	Gorham
1	DGAS	Scott City
6	Big Creek Riders	Scott City
6-7	SCHC	Smith Center
7-8	Big Creek Riders	Scott City
7-8	E-5	Bentley
13-14	C & L	
14-15	Ogallah SC	WaKeeney
19	Garden City Wranglers	Garden City

**AUGUST**

1	Lane County	Dighton
4-5	DGAS	Scott City
4-5	E-5	
8-9	CBS	Alton
10	G & G	Scott City
10-11	C & L	
10-11	SCHS	Smith Center
11-12	SC Broncos	Scott City
18-19	EKC	Bentley
18	Colby Trail Blazers	Colby
18-19	Sandhill Vaqueros	Garden City
18-19	Quinter SC	WaKeeney
18-19	Fort Bissell	Phillipsburg
19	Show Season Ends	
21	State Show Entries Postmarked by	

**SEPTEMBER**

1-2	KWAH State Show	Bentley
-----	-----------------	---------

**NOVEMBER**

3	Fall Banquet	Great Bend
---	--------------	------------

**CBS Saddle Club - KWAH Horse Show**

**June 6-7, 2012**

**(Rain Date July 18-19, 2012.)**

**BCR Arena located across the road from Jr. High School - Alton, KS**

**KWAH Judges: Janice Boland, Brice Guttery, Shana Guttery**

**Arena Information: Brice Guttery, 785-476-5710, Troy Cocley, 785-476-7112**

**Wednesday & Thursday: Entries close PROMPTLY**

**at 5:00 p.m., show starts at 5:15 p.m.**

**Wednesday, June 6**

1. Flag Race..... 1-9
2. Straight Barrels..... 1-9
3. Straight Barrels..... 10-13
4. Straight Barrels..... 14-17
5. Straight Barrels..... Women
6. Straight Barrels..... Sr. Women
7. Straight Barrels..... Sr. Men
8. Straight Barrels..... Men
9. Polo Turn..... 1-9
10. Polo Turn..... 10-13
11. Polo Turn..... 14-17
12. Polo Turn..... Women
13. Polo Turn..... Sr. Women
14. Polo Turn..... Sr. Men
15. Polo Turn..... Men
16. Barrel & Stake (Graduated)..... 1-9
17. Barrel & Stake..... 10-13
18. Barrel & Stake..... 14-17
19. Barrel & Stake..... Women
20. Barrel & Stake..... Sr. Women
21. Barrel & Stake..... Sr. Men
22. Barrel & Stake..... Men
23. Half Eight..... 1-9
24. Half Eight..... 10-13
25. Half Eight..... 14-17
26. Half Eight..... Women
27. Half Eight..... Sr. Women
28. Half Eight..... Sr. Men
29. Half Eight..... Men
30. Western Relay

**Thursday, June 7**

31. Cloverleaf..... 1-9
32. Cloverleaf..... 10-13
33. Cloverleaf..... 14-17
34. Cloverleaf..... Women
35. Cloverleaf..... Sr. Women
36. Cloverleaf..... Sr. Men
37. Cloverleaf..... Men
38. Key Race..... 1-9
39. Key Race..... 10-13
40. Key Race..... 14-17
41. Key Race..... Women
42. Key Race..... Sr. Women
43. Key Race..... Sr. Men
44. Key Race..... Men
45. Figure Eight Stake..... 1-9
46. Figure Eight Stake..... 10-13
47. Figure Eight Stake..... 14-17
48. Figure Eight Stake..... Women
49. Figure Eight Stake..... Sr. Women
50. Figure Eight Stake..... Sr. Men
51. Figure Eight Stake..... Men
52. Two Barrel Flag..... 10-13
53. Two Barrel Flag..... 14-17
54. Two Barrel Flag..... Women
55. Two Barrel Flag..... Sr. Women
56. Two Barrel Flag..... Sr. Men
57. Two Barrel Flag..... Men
58. Pair Sack

**All Events Points Only – No Late Entries – No Phone Entries**

**\$6 Office Charge (Host club \$5, KWAH \$1) per person will be collected and must accompany early entries.**

**Please make checks payable to Bull City Roughriders Saddle Club.**

**Mail Early Entries to: Shana Guttery, 769 S. 220<sup>th</sup> Avenue, Alton, KS 67623**

**Horse pens available at \$10/horse for two day show. Electric hook-ups \$15.00 for two day show. Early reservations appreciated, otherwise, first come first serve on day of show.**

**All dogs must be on leash.**

**Not responsible for accidents.**

**Rockin S Saddle Club**  
**KWHA Show**  
**1448 Walker Avenue, Gorham KS**  
**June 9<sup>th</sup>, 2012 (Rain Date June 30, 2012)**  
**KWHA Judges: Glenda Ratlaff and Brian Kuntz**  
**Office Charge \$6.00 per contestant ( \$5.00 to host club, \$1.00 to KWHA)**  
**Entries do not close until first horse enters in each class.**  
**BBQ served Saturday night at NO CHARGE**

**Saturday, Show Starts at 10:00 am**

- |                                      |                                      |
|--------------------------------------|--------------------------------------|
| 1. Western Lead Line..... 1-5        | 32. Pole Bending ..... 1-9           |
| 2. Walk-Trot Horsemanship..... 1-7   | 33. Pole Bending ..... 10-13         |
| 3. Bareback Tandem                   | 34. Pole Bending ..... 14-17         |
| 4. Horsemanship..... 1-9             | 35. Pole Bending ..... Men           |
| 5. Horsemanship..... 10-13           | 36. Pole Bending ..... Sr. Men       |
| 6. Horsemanship..... 14-17           | 37. Pole Bending ..... Women         |
| 7. Western Pleasure ..... Men        | 38. Pole Bending ..... Sr. Women     |
| 8. Western Pleasure ..... Sr. Men    | 39. Key Race ..... 1-9               |
| 9. Western Pleasure ..... Women      | 40. Key Race ..... 10-13             |
| 10. Western Pleasure ..... Sr. Women | 41. Key Race ..... 14-17             |
| 11. Reining..... Junior              | 42. Key Race ..... Men               |
| 12. Reining..... Men                 | 43. Key Race ..... Sr. Men           |
| 13. Reining..... Sr. Men             | 44. Key Race ..... Women             |
| 14. Reining..... Women               | 45. Key Race ..... Sr. Women         |
| 15. Reining..... Sr. Women           | 46. Cloverleaf..... 1-9              |
| 16. Junior Queen                     | 47. Cloverleaf..... 10-13            |
| 17. Senior Queen                     | 48. Cloverleaf..... 14-17            |
| 18. Lead Back..... 1-9               | 49. Cloverleaf..... Men              |
| 19. Lead Back (heated) ..... 10-13   | 50. Cloverleaf..... Sr. Men          |
| 20. Lead Back (heated) ..... 14-17   | 51. Cloverleaf..... Women            |
| 21. Hay Race (heated)..... Men       | 52. Cloverleaf..... Sr. Women        |
| 22. Hay Race (heated)..... Sr. Men   | 53. Straight Barrels ..... 1-9       |
| 23. Hay Race (heated)..... Women     | 54. Straight Barrels ..... 10-13     |
| 24. Hay Race (heated)..... Sr. Women | 55. Straight Barrels ..... 14-17     |
| 25. Flying W..... 1-9                | 56. Straight Barrels ..... Men       |
| 26. Flying W..... 10-13              | 57. Straight Barrels ..... Sr. Men   |
| 27. Flying W..... 14-17              | 58. Straight Barrels ..... Women     |
| 28. Flying W..... Men                | 59. Straight Barrels ..... Sr. Women |
| 29. Flying W..... Sr. Men            | 60. Pair Sack                        |
| 30. Flying W..... Women              |                                      |
| 31. Flying W..... Sr. Women          |                                      |

**NOT RESPONSIBLE FOR ACCIDENTS**

Concession stand on grounds      All dogs on leash  
 Stalls \$10.00 per night. Call to reserve please. Cowboy church Sunday 9:00 am  
 Arena located 2 miles north of Walker exit off I-70 Signs will be posted with directions.

This show will be held outdoors.  
**ARENA INFORMATION CALL**  
 Stan Schremmer 785-656-2787  
 Nancy Schremmer 785-635-9151

**Rockin S Saddle Club**  
**KWHA Show**  
**1448 Walker Avenue, Gorham KS**  
**June 10th, 2012 (Rain Date July 1, 2012)**  
**KWHA Judges: Glenda Ratlaff and Brian Kuntz**  
**Office Charge \$6.00 per contestant ( \$5.00 to host club, \$1.00 to KWHA)**  
**Entries do not close until first horse enters in each class.**  
**BBQ served Saturday night at NO CHARGE**

**Sunday, Show Starts at 10:00 am**

- |  |                                    |
|--|------------------------------------|
| 1. Saddle & Rescue (heated)            | 30. Two Barrel Flag..... 10-13     |
| 2. Figure 8 Stake Race ..... 1-9       | 31. Two Barrel Flag..... 14-17     |
| 3. Figure 8 Stake Race ..... 10-13     | 32. Two Barrel Flag..... Men       |
| 4. Figure 8 Stake Race ..... 14-17     | 33. Two Barrel Flag..... Sr. Men   |
| 5. Figure 8 Stake Race ..... Men       | 34. Two Barrel Flag..... Women     |
| 6. Figure 8 Stake Race ..... Sr. Men   | 35. Two Barrel Flag..... Sr. Women |
| 7. Figure 8 Stake Race ..... Women     | 36. Flag Race..... 1-9             |
| 8. Figure 8 Stake Race ..... Sr. Women | 37. Flag Race..... 10-13           |
| 9. Polo Turn ..... 1-9                 | 38. Flag Race..... 14-17           |
| 10. Polo Turn ..... 10-13              | 39. Flag Race..... Men             |
| 11. Polo Turn ..... 14-17              | 40. Flag Race..... Sr. Men         |
| 12. Polo Turn ..... Men                | 41. Flag Race..... Women           |
| 13. Polo Turn ..... Sr. Men            | 42. Flag Race..... Sr. Women       |
| 14. Polo Turn ..... Women              | 43. Speed Barre s ..... 1-9        |
| 15. Polo Turn ..... Sr. Women          | 44. Speed Barre s ..... 10-13      |
| 16. Half 8 Race ..... 1-9              | 45. Speed Barre's ..... 14-17      |
| 17. Half 8 Race ..... 10-13            | 46. Speed Barre's ..... Men        |
| 18. Half 8 Race ..... 14-17            | 47. Speed Barrels ..... Sr. Men    |
| 19. Half 8 Race ..... Men              | 48. Speed Barrels ..... Women      |
| 20. Half 8 Race ..... Sr. Men          | 49. Speed Barrels ..... Sr. Women  |
| 21. Half 8 Race ..... Women            | 50. Rescue Race                    |
| 22. Half 8 Race ..... Sr. Women        | 51. Western Relay                  |
| 23. Barrel and Stake Graduated 1-9     |                                    |
| 24. Barrel and Stake ..... 10-13       |                                    |
| 25. Barrel and Stake ..... 14-17       |                                    |
| 26. Barrel and Stake ..... Men         |                                    |
| 27. Barrel and Stake ..... Sr. Men     |                                    |
| 28. Barrel and Stake ..... Women       |                                    |
| 29. Barrel and Stake ..... Sr. Women   |                                    |

**NOT RESPONSIBLE FOR ACCIDENTS**

Concession stand on grounds      All dogs on leash  
 Stalls \$10.00 per right. Call to reserve please. Cowboy church Sunday 9:00 am  
 Arena located 2 miles north of Walker exit off I-70 Signs will be posted with directions.

This show will be held outdoors.  
**ARENA INFORMATION CALL**  
 Stan Schremmer 785-656-2787  
 Nancy Schremmer 785-635-9151

## Sagebrush KWAH Horse Show

**June 12, 2012**

Finney County Fairgrounds, Garden City, KS    Entries Close 6:30 PM    Show Starts 7:00 PM

KWAH Judges: Curtis Peterson, Monique Miller, Linda Sanders, Dak Miller

1. Western Lead Line.....	1-5	26. Polo Turn.....	1-9
2. Walk-Trot Horsemanship.....	1-7	27. Polo Turn.....	10-13
3. Saddle & Rescue		28. Polo Turn.....	14-17
4. Rescue		29. Polo Turn.....	Sr. Men
5. Lead Back.....	1-9	30. Polo Turn.....	Men
6. Lead Back.....	10-13	31. Polo Turn.....	Women
7. Lead Back.....	14-17	32. Polo Turn.....	Sr. Women
8. Hay Race.....	Sr. Men	33. Flag Race.....	1-9
9. Hay Race.....	Men	34. Two Barrel Flag.....	10-13
10. Hay Race.....	Women	35. Two Barrel Flag.....	14-17
11. Hay Race.....	Sr. Women	36. Two Barrel Flag.....	Sr. Men
12. Graduated Barrel & Stake.....	1-9	37. Two Barrel Flag.....	Men
13. Barrel & Stake.....	10-13	38. Two Barrel Flag.....	Women
14. Barrel & Stake.....	14-17	39. Two Barrel Flag.....	Sr. Women
15. Barrel & Stake.....	Sr. Men	40. Western Relay	
16. Barrel & Stake.....	Men		
17. Barrel & Stake.....	Women		
18. Barrel & Stake.....	Sr. Women		
19. Half 8 Race.....	1-9		
20. Half 8 Race.....	10-13		
21. Half 8 Race.....	14-17		
22. Half 8 Race.....	Sr. Men		
23. Half 8 Race.....	Men		
24. Half 8 Race.....	Women		
25. Half 8 Race.....	Sr. Women		

Arena Information:  
 Curtis Peterson 620-271-3941  
 Linda Sanders 620-214-3251  
 All Dogs must be on a Leash  
 Not Responsible for Accidents  
 Concession Stand on Grounds

## MKC Saddle Club KWAH Show

**June 14<sup>th</sup>, 2012    Show Starts 7:00pm**

Arena is located 1 mile North of Bentley, KS and 1 1/2 miles east on 117<sup>th</sup> St. N.

KWAH Judge: Robbie Knapp, Penny Knapp, Heather Schreivogel, Jeff Johns    Arena Information: Robbie Knapp 316-680-6288

Office Charge \$6.00 (Host Club gets \$5.00, KWAH gets \$1.00)

Mail early entries to: Lynn Dalrymple, 12717 W 117<sup>th</sup> N, Sedgwick, KS 67135    Entries Do Not Close until first horse enters in each class.

1. Western Lead Line.....	1-5	23. Flag Race.....	1-9
2. Straight Barrels.....	1-9	24. Flag Race.....	10-13
3. Straight Barrels.....	10-13	25. Flag Race.....	14-17
4. Straight Barrels.....	14-17	26. Flag Race.....	Men
5. Straight Barrels.....	Men	27. Flag Race.....	Sr. Men
6. Straight Barrels.....	Sr. Men	28. Flag Race.....	Women
7. Straight Barrels.....	Women	29. Flag Race.....	Sr. Women
8. Straight Barrels.....	Sr. Women	30. Half 8 Race.....	1-9
9. Pole Bending.....	1-9	31. Half 8 Race.....	10-13
10. Pole Bending.....	10-13	32. Half 8 Race.....	14-17
11. Pole Bending.....	14-17	33. Half 8 Race.....	Men
12. Pole Bending.....	Men	34. Half 8 Race.....	Sr. Men
13. Pole Bending.....	Sr. Men	35. Half 8 Race.....	Women
14. Pole Bending.....	Women	36. Half 8 Race.....	Sr. Women
15. Pole Bending.....	Sr. Women		
16. Barrel & Stake Graduated.....	1-9		
17. Barrel & Stake.....	10-13		
18. Barrel & Stake.....	14-17		
19. Barrel & Stake.....	Men		
20. Barrel & Stake.....	Sr. Men		
21. Barrel & Stake.....	Women		
22. Barrel & Stake.....	Sr. Women		

All Dogs MUST be on a leash.  
 No Dogs in Building.  
 Not Responsible for Accidents.  
 Concessions stand on grounds.

## Butler County Saddle Club KWAH Show

June 15-16 (Rain Date June 29-30)

LEON, KS-Arena located 6 miles E of Augusta, KS on Hwy 54, Take Fredonia Exit, Arena on N Side of Hwy

KWAH Judge: Tonya Kohr

Arena Info: Clint Pierce 316/299-8956 Lisa Pierce 316/258-2881

Office Charge \$5.00 per Person for Entire Show Entries Do Not Close Till First Horse Enters in Each Class

CONCESSIONS ON GROUNDS—STALLS AVAILABLE

### FRIDAY, Show Starts at 6:00 PM

1. Western Lead Line.....	1-5
2. Walk-Trot Horsemanship.....	1-7
3. Horsemanship.....	1-9
4. Horsemanship.....	10-13
5. Horsemanship.....	14-17
6. Western Pleasure.....	Men
7. Western Pleasure.....	Sr. Men
8. Western Pleasure.....	Women
9. Western Pleasure.....	Sr. Women
10. Flying W.....	1-9
11. Flying W.....	10-13
12. Flying W.....	14-17
13. Flying W.....	Men
14. Flying W.....	Sr. Men
15. Flying W.....	Women
16. Flying W.....	Sr. Women
17. Key Race.....	1-9
18. Key Race.....	10-13
19. Key Race.....	14-17
20. Key Race.....	Men
21. Key Race.....	Sr. Men
22. Key Race.....	Women
23. Key Race.....	Sr. Women
24. Figure 8 Stake.....	1-9
25. Figure 8 Stake.....	10-13
26. Figure 8 Stake.....	14-17
27. Figure 8 Stake.....	Men
28. Figure 8 Stake.....	Sr. Men
29. Figure 8 Stake.....	Women
30. Figure 8 Stake.....	Sr. Women
31. Spec Barrels.....	1-9
32. Spec Barrels.....	10-13
33. Spec Barrels.....	14-17
34. Spec Barrels.....	Men
35. Spec Barrels.....	Sr. Men
36. Spec Barrels.....	Women
37. Spec Barrels.....	Sr. Women
38. Polo Turn.....	1-9
39. Polo Turn.....	10-13
40. Polo Turn.....	14-17
41. Polo Turn.....	Men
42. Polo Turn.....	Sr. Men
43. Polo Turn.....	Women
44. Polo Turn.....	Sr. Women

**BCSC NOT RESPONSIBLE FOR ACCIDENTS**

#### SPONSORED BY:

**EQUINE EDGE CONSULTATIONS**

**Lisa Pierce, Equine Nutritionist**

**FEED N' WIN Performance Feed**

**\*Helping your Horse Achieve Their OPTIMUM**

**Performance Condition\***

### SATURDAY, Show Starts at 9:00AM

45. Saddle & Rescue.....	
46. Rescue Race.....	
47. Lead Back.....	1-9
48. Lead Back.....	10-13
49. Lead Back.....	14-17
50. Cloverleaf Barrels.....	1-9
51. Cloverleaf Barrels.....	10-13
52. Cloverleaf Barrels.....	14-17
53. Cloverleaf Barrels.....	Men
54. Cloverleaf Barrels.....	Sr. Men
55. Cloverleaf Barrels.....	Women
56. Cloverleaf Barrels.....	Sr. Women
57. Flag Race.....	1-9
58. Flag Race.....	10-13
59. Flag Race.....	14-17
60. Flag Race.....	Men
61. Flag Race.....	Sr. Men
62. Flag Race.....	Women
63. Flag Race.....	Sr. Women
64. Keg Bending.....	1-9
65. Keg Bending.....	10-13
66. Keg Bending.....	14-17
67. Keg Bending.....	Men
68. Keg Bending.....	Sr. Men
69. Keg Bending.....	Women
70. Keg Bending.....	Sr. Women
71. Two Barrel Flag.....	10-13
72. Two Barrel Flag.....	14-17
73. Two Barrel Flag.....	Men
74. Two Barrel Flag.....	Sr. Men
75. Two Barrel Flag.....	Women
76. Two Barrel Flag.....	Sr. Women
77. Pole Bending.....	1-9
78. Pole Bending.....	10-13
79. Pole Bending.....	14-17
80. Pole Bending.....	Men
81. Pole Bending.....	Sr. Men
82. Pole Bending.....	Women
83. Pole Bending.....	Sr. Women
84. Straight Barrels.....	1-9
85. Straight Barrels.....	10-13
86. Straight Barrels.....	14-17
87. Straight Barrels.....	Men
88. Straight Barrels.....	Sr. Men
89. Straight Barrels.....	Women
90. Straight Barrels.....	Sr. Women
91. Half 8 Race.....	1-9
92. Half 8 Race.....	10-13
93. Half 8 Race.....	14-17
94. Half 8 Race.....	Men
95. Half 8 Race.....	Sr. Men
96. Half 8 Race.....	Women
97. Half 8 Race.....	Sr. Women
98. Barrel & Stake (graduated).....	1-9
99. Barrel & Stake.....	10-13
100. Barrel & Stake.....	14-17
101. Barrel & Stake.....	Men
102. Barrel & Stake.....	Sr. Men
103. Barrel & Stake.....	Women
104. Barrel & Stake.....	Sr. Women
105. Pair Sack.....	
106. Western Relay.....	
107. Devil's Cowhide.....	

## Lane County Saddle Club

**June 15 & 16, 2012**

Lane County Fairgrounds, Dighton, KS –Mail Early Entries to: Mariece O'Brien, PO Box 1001 Dighton, KS 67839  
No Phone Entries, Office Charge \$6.00(\$1.00 to KWHH-\$5.00 to Club)

Arena Info: Lisa Redburn 620-397-3385 or Dustin Hoffman 620-397-3873 KWHH Judge: Linda Sanders

### June 15, 2012 Entries Close 6:00pm Show Starts 6:30pm

1.	Bareback Tandem	
2.	Western Pleasure	Women
3.	Western Pleasure	Sr. Women
4.	Western Pleasure	Men
5.	Western Pleasure	Sr. Men
6.	Lead Back	1-9
7.	Lead Back (Heated)	10-13
8.	Lead Back (Heated)	14-17
9.	Hay Race (Heated)	Women
10.	Hay Race (Heated)	Sr. Women
11.	Hay Race (Heated)	Men
12.	Hay Race (Heated)	Sr. Men
13.	Key Race	1-9
14.	Key Race	10-13
15.	Key Race	14-17
16.	Key Race	Women
17.	Key Race	Sr. Women
18.	Key Race	Men
19.	Key Race	Sr. Men
20.	Polo Turn	1-9
21.	Polo Turn	10-13
22.	Polo Turn	14-17
23.	Polo Turn	Women
24.	Polo Turn	Sr. Women
25.	Polo Turn	Men
26.	Polo Turn	Sr. Men
27.	Keg Bending	1-9
28.	Keg Bending	10-13
29.	Keg Bending	14-17
30.	Keg Bending	Women
31.	Keg Bending	Sr. Women
32.	Keg Bending	Men
33.	Keg Bending	Sr. Men
34.	Two Barrel Flag	10-13
35.	Two Barrel Flag	14-17
36.	Two Barrel Flag	Women
37.	Two Barrel Flag	Sr. Women
38.	Two Barrel Flag	Men
39.	Two Barrel Flag	Sr. Men
40.	Cloverleaf	1-9
41.	Cloverleaf	10-13
42.	Cloverleaf	14-17
43.	Cloverleaf	Women
44.	Cloverleaf	Sr. Women
45.	Cloverleaf	Men
46.	Cloverleaf	Sr. Men
47.	Rescue Race	
48.	Devil's Cowhide	

### June 16, 2012 Entries Close 9:00am Show Starts 9:30am

49.	Western Lead Line	1-5
50.	Walk-Trot Horsemanship	1-7
51.	Horsemanship	1-9
52.	Horsemanship	10-13
53.	Horsemanship	14-17
54.	Junior Queen	
55.	Senior Queen	
56.	Reining	Junior
57.	Reining	Women
58.	Reining	Sr. Women
59.	Reining	Men
60.	Reining	Sr. Men

61.	Saddle & Rescue (Heated)	
62.	Speed Barrels	1-9
63.	Speed Barrels	10-13
64.	Speed Barrels	14-17
65.	Speed Barrels	Women
66.	Speed Barrels	Sr. Women
67.	Speed Barrels	Men
68.	Speed Barrels	Sr. Men
69.	Flag Race	1-9
70.	Flag Race	10-13
71.	Flag Race	14-17
72.	Flag Race	Women
73.	Flag Race	Sr. Women
74.	Flag Race	Men
75.	Flag Race	Sr. Men
76.	Half 8 Race	1-9
77.	Half 8 Race	10-13
78.	Half 8 Race	14-17
79.	Half 8 Race	Women
80.	Half 8 Race	Sr. Women
81.	Half 8 Race	Men
82.	Half 8 Race	Sr. Men
83.	Figure 8 Stake	1-9
84.	Figure 8 Stake	10-13
85.	Figure 8 Stake	14-17
86.	Figure 8 Stake	Women
87.	Figure 8 Stake	Sr. Women
88.	Figure 8 Stake	Men
89.	Figure 8 Stake	Sr. Men
90.	Pole Bending	1-9
91.	Pole Bending	10-13
92.	Pole Bending	14-17
93.	Pole Bending	Women
94.	Pole Bending	Sr. Women
95.	Pole Bending	Men
96.	Pole Bending	Sr. Men
97.	Flying W	1-9
98.	Flying W	10-13
99.	Flying W	14-17
100.	Flying W	Women
101.	Flying W	Sr. Women
102.	Flying W	Men
103.	Flying W	Sr. Men
104.	Straight Barrels	1-9
105.	Straight Barrels	10-13
106.	Straight Barrels	14-17
107.	Straight Barrels	Women
108.	Straight Barrels	Sr. Women
109.	Straight Barrels	Men
110.	Straight Barrels	Sr. Men
111.	Barrel & Stake (Graduated)	1-9
112.	Barrel & Stake	10-13
113.	Barrel & Stake	14-17
114.	Barrel & Stake	Women
115.	Barrel & Stake	Sr. Women
116.	Barrel & Stake	Men
117.	Barrel & Stake	Sr. Men
118.	Western Relay	

Concessions Available on grounds

All dogs must be on a leash

Lane County Saddle Club is NOT responsible for accidents



**WaKeeney Saddle Club, KWA Horse Show****June 16 & 17**

Arena Located on 283 HWY North —Judges: Mischell Sauer, Lucille Benton

Contact: Howard Sauer 785-743-8104 or Mischell 785-743-8083 Concession Stand on Grounds

**June 16, 2012****Entries Close 10:30 Show Starts 11:00**

1.	Western Pleasure.....	Sr. Men
2.	Western Pleasure.....	Men
3.	Western Pleasure.....	Sr. Women
4.	Western Pleasure.....	Women
5.	Horsemanship.....	14-17
6.	Horsemanship.....	10-13
7.	Horsemanship.....	1-9
8.	Junior Queen	
9.	Senior Queen	
10.	Western Lead Line.....	1-5
11.	Walk-Trot Horsemanship.....	1-7
12.	Bareback Tandem	
13.	Reining.....	Junior
14.	Reining.....	Women
15.	Reining.....	Sr. Women
16.	Reining.....	Men
17.	Reining.....	Sr. Men
18.	Hay Race.....	Women
19.	Hay Race.....	Sr. Women
20.	Hay Race.....	Men
21.	Hay Race.....	Sr. Men
22.	Flying W.....	1-9
23.	Flying W.....	10-13
24.	Flying W.....	14-17
25.	Flying W.....	Women
26.	Flying W.....	Sr. Women
27.	Flying W.....	Men
28.	Flying W.....	Sr. Men
29.	Rescue Race	
30.	Barrel & Stake Graduated.....	1-9
31.	Barrel & Stake.....	10-13
32.	Barrel & Stake.....	14-17
33.	Barrel & Stake.....	Women
34.	Barrel & Stake.....	Sr. Women
35.	Barrel & Stake.....	Men
36.	Barrel & Stake.....	Sr. Men
37.	Figure 8 Stake.....	1-9
38.	Figure 8 Stake.....	10-13
39.	Figure 8 Stake.....	14-17
40.	Figure 8 Stake.....	Women
41.	Figure 8 Stake.....	Sr. Women
42.	Figure 8 Stake.....	Men
43.	Figure 8 Stake.....	Sr. Men
44.	Straight Barrels.....	1-9
45.	Straight Barrels.....	10-13
46.	Straight Barrels.....	14-17
47.	Straight Barrels.....	Women
48.	Straight Barrels.....	Sr. Women
49.	Straight Barrels.....	Men
50.	Straight Barrels.....	Sr. Men
51.	Cloverleaf.....	1-9
52.	Cloverleaf.....	10-13
53.	Cloverleaf.....	14-17
54.	Cloverleaf.....	Women
55.	Cloverleaf.....	Sr. Women
56.	Cloverleaf.....	Men
57.	Cloverleaf.....	Sr. Men
58.	Pair Sack	
59.	Devil's Cowhide	

**June 17, 2012****Entries Close 10:30 Show Starts 11:00**

60.	Saddle & Rescue	
61.	Lead Back.....	1-9
62.	Lead Back.....	10-13
63.	Lead Back.....	14-17
64.	Key Race.....	1-9
65.	Key Race.....	10-13
66.	Key Race.....	14-17
67.	Key Race.....	Women
68.	Key Race.....	Sr. Women
69.	Key Race.....	Men
70.	Key Race.....	Sr. Men
71.	Half 8 Race.....	1-9
72.	Half 8 Race.....	10-13
73.	Half 8 Race.....	14-17
74.	Half 8 Race.....	Women
75.	Half 8 Race.....	Sr. Women
76.	Half 8 Race.....	Men
77.	Half 8 Race.....	Sr. Men
78.	Pole Bending.....	1-9
79.	Pole Bending.....	10-13
80.	Pole Bending.....	14-17
81.	Pole Bending.....	Women
82.	Pole Bending.....	Sr. Women
83.	Pole Bending.....	Men
84.	Pole Bending.....	Sr. Men
85.	Two Barrel Flag.....	10-13
86.	Two Barrel Flag.....	14-17
87.	Two Barrel Flag.....	Women
88.	Two Barrel Flag.....	Sr. Women
89.	Two Barrel Flag.....	Men
90.	Two Barrel Flag.....	Sr. Men
91.	Speed Barrels.....	1-9
92.	Speed Barrels.....	10-13
93.	Speed Barrels.....	14-17
94.	Speed Barrels.....	Women
95.	Speed Barrels.....	Sr. Women
96.	Speed Barrels.....	Men
97.	Speed Barrels.....	Sr. Men
98.	Flag Race.....	1-9
99.	Flag Race.....	10-13
100.	Flag Race.....	14-17
101.	Flag Race.....	Women
102.	Flag Race.....	Sr. Women
103.	Flag Race.....	Men
104.	Flag Race.....	Sr. Men
105.	Polo Turn.....	1-9
106.	Polo Turn.....	10-13
107.	Polo Turn.....	14-17
108.	Polo Turn.....	Women
109.	Polo Turn.....	Sr. Women
110.	Polo Turn.....	Men
111.	Polo Turn.....	Sr. Men
112.	Western Relay	

## Sagebrush KWA Horse Show

June 21, 2012

Finney County Fairgrounds, Garden City, KS    Entries Close 6:30 PM    Show Starts 7:00 PM  
KWA Judges: Curtis Peters on, Monique Miller, Linda Sanders, Dak Miller

- |                          |           |                           |           |
|--------------------------|-----------|---------------------------|-----------|
| 1. Horsemanship.....     | 1-9       | 22. Straight Barrels..... | 1-9       |
| 2. Horsemanship.....     | 10-13     | 23. Straight Barrels..... | 10-13     |
| 3. Horsemanship.....     | 14-17     | 24. Straight Barrels..... | 14-17     |
| 4. Western Pleasure..... | Sr. Men   | 25. Straight Barrels..... | Sr. Men   |
| 5. Western Pleasure..... | Men       | 26. Straight Barrels..... | Men       |
| 6. Western Pleasure..... | Women     | 27. Straight Barrels..... | Women     |
| 7. Western Pleasure..... | Sr. Women | 28. Straight Barrels..... | Sr. Women |
| 8. Junior Queen          |           | 29. Flag Race.....        | 1-9       |
| 9. Senior Queen          |           | 30. Two Barrel Flag.....  | 10-13     |
| 10. Reining.....         | Junior    | 31. Two Barrel Flag.....  | 14-17     |
| 11. Reining.....         | Sr. Men   | 32. Two Barrel Flag.....  | Sr. Men   |
| 12. Reining.....         | Men       | 33. Two Barrel Flag.....  | Men       |
| 13. Reining.....         | Women     | 34. Two Barrel Flag.....  | Women     |
| 14. Reining.....         | Sr. Women | 35. Two Barrel Flag.....  | Sr. Women |
| 15. Keg Bending.....     | 1-9       | 36. Pair Sack             |           |
| 16. Keg Bending.....     | 10-13     | 37. Devil's Cowhide       |           |
| 17. Keg Bending.....     | 14-17     |                           |           |
| 18. Keg Bending.....     | Sr. Men   |                           |           |
| 19. Keg Bending.....     | Men       |                           |           |
| 20. Keg Bending.....     | Women     |                           |           |
| 21. Keg Bending.....     | Sr. Women |                           |           |

Arena Information:  
Curtis Peterson 620-271-3941  
Linda Sanders 620-214-3251  
All Dogs must be on a Leash  
Not Responsible for Accidents  
Concession Stand on Grounds

### REMINDERS FROM KWA SECRETARY MISHELL SAUER...

Rule Changes need to be in the hand of a board member by June 1, 2012. Please make sure you have the rule change on the rule change forms and the way you want it to be voted on.

It is not too late to order T-shirts or Sweatshirts. Your club secretary has the form and it is also in this Herald.

Make sure to mark your calendar for the KWA Benefit Show .  
Going to have a horse painting contest after the show on Saturday.  
\$2.00 entry fee, Junior and Senior Age Group, Pot Luck after show  
on Saturday, WaKeeney will be having a live auction and Bentley  
will be having a silent auction.

## O-Mok-See Bit & Spur Arena

June 23<sup>rd</sup> & 24<sup>th</sup>, 2012

Arena is located 1 mile North of Bentley, KS and 1 ½ miles east on 117<sup>th</sup> St. N.

**KWA Judge:** Robbie Knapp, Penny Knapp, Heather Schreibvogel, Jeff Johns

**Arena Information:** Robbie Knapp 316-680-6288

\$10 for the weekend, no awards, just fun and practice for Nationals!!!

**Mail early entries to:** Lynn Dalrymple, 12717 W 117<sup>th</sup> N, Sedgwick, KS 67135

Entries Do Not Close until first horse enters in each class

### Show Starts 9:00 am

1. Pole Bending..... 1-9
2. Pole Bending..... 10-13
3. Pole Bending..... 14-17
4. Pole Bending..... Men
5. Pole Bending..... Sr. Men
6. Pole Bending..... Women
7. Pole Bending..... Sr. Women
8. Figure 8 Stake..... 1-9
9. Figure 8 Stake..... 10-13
10. Figure 8 Stake..... 14-17
11. Figure 8 Stake..... Men
12. Figure 8 Stake..... Sr. Men
13. Figure 8 Stake..... Women
14. Figure 8 Stake..... Sr. Women
15. Tomahawk..... 1-9
16. Tomahawk..... 10-13
17. Tomahawk..... 14-17
18. Tomahawk..... Men
19. Tomahawk..... Sr. Men
20. Tomahawk..... Women
21. Tomahawk..... Sr. Women
22. Arena Race..... 1-9
23. Arena Race..... 10-13
24. Arena Race..... 14-17
25. Arena Race..... Men
26. Arena Race..... Sr. Men
27. Arena Race..... Women
28. Arena Race..... Sr. Women
29. Rescue Race
30. Flag Race..... 1-9
31. Flag Race..... 10-13
32. Flag Race..... 14-17
33. Flag Race..... Men
34. Flag Race..... Sr. Men
35. Flag Race..... Women
36. Flag Race..... Sr. Women
37. Team Arena
38. Two barrel Flag..... 10-13
39. Two barrel Flag..... 14-17
40. Two barrel Flag..... Men
41. Two barrel Flag..... Sr. Men
42. Two barrel Flag..... Women
43. Two barrel Flag..... Sr. Women

Scurry Race will be set up Saturday Night for Practice

### Show Starts 9:00 am

44. Kegs..... 1-9
45. Kegs..... 10-13
46. Kegs..... 14-17
47. Kegs..... Men
48. Kegs..... Sr. Men
49. Kegs..... Women
50. Kegs..... Sr. Women
51. Barrel & Stake Graduated..... 1-9
52. Barrel & Stake..... 10-13
53. Barrel & Stake..... 14-17
54. Barrel & Stake..... Men
55. Barrel & Stake..... Sr. Men
56. Barrel & Stake..... Women
57. Barrel & Stake..... Sr. Women
58. Half Eight Race..... 1-9
59. Half Eight Race..... 10-13
60. Half Eight Race..... 14-17
61. Half Eight Race..... Men
62. Half Eight Race..... Sr. Men
63. Half Eight Race..... Women
64. Half Eight Race..... Sr. Women
65. Pair Sack
66. Polo Turn..... 1-9
67. Polo Turn..... 10-13
68. Polo Turn..... 14-17
69. Polo Turn..... Men
70. Polo Turn..... Sr. Men
71. Polo Turn..... Women
72. Polo Turn..... Sr. Women
73. Key Race..... 1-9
74. Key Race..... 10-13
75. Key Race..... 14-17
76. Key Race..... Men
77. Key Race..... Sr. Men
78. Key Race..... Women
79. Key Race..... Sr. Women
80. Straight Barrels..... 1-9
81. Straight Barrels..... 10-13
82. Straight Barrels..... 14-17
83. Straight Barrels..... Men
84. Straight Barrels..... Sr. Men
85. Straight Barrels..... Women
86. Straight Barrels..... Sr. Women
87. Exchange Race

All Dogs MUST be on a leash. No Dogs in Building.

Not Responsible for Accidents.

Concessions stand on grounds.

**CBS Saddle Club - KWAH Horse Show**

**June 27-28, 2012**

**(Rain Date July 21, 2012. Start Time TBD)**

**BCR Arena located across the road from Jr. High School - Alton, KS**

**KWAH Judges:** Janice Boland, Brice Guttery, Shana Guttery

**Arena Information:** Brice Guttery, 785-476-5710, Troy Cooley, 785-476-7112

**Wednesday & Thursday: Entries close PROMPTLY**

**at 5:00 p.m., show starts at 5:15 p.m.**

**Wednesday, June 27**

1. Pole Bending ..... 1-9
2. Pole Bending ..... 10-13
3. Pole Bending ..... 14-17
4. Pole Bending ..... Women
5. Pole Bending ..... Sr. Women
6. Pole Bending ..... Sr. Men
7. Pole Bending ..... Men
8. Polo Turn ..... 1-9
9. Polo Turn ..... 10-13
10. Polo Turn ..... 14-17
11. Polo Turn ..... Women
12. Polo Turn ..... Sr. Women
13. Polo Turn ..... Sr. Men
14. Polo Turn ..... Men
15. Barrel & Stake (Graduated) . 1-9
16. Barrel & Stake ..... 10-13
17. Barrel & Stake ..... 14-17
18. Barrel & Stake ..... Women
19. Barrel & Stake ..... Sr. Women
20. Barrel & Stake ..... Sr. Men
21. Barrel & Stake ..... Men
22. Half Eight..... 1-9
23. Half Eight..... 10-13
24. Half Eight..... 14-17
25. Half Eight..... Women
26. Half Eight..... Sr. Women
27. Half Eight..... Sr. Men
28. Half Eight ..... Men
29. Western Relay
30. Devil's Cowhide

**Thursday, June 28**

31. Rescue Race (heated)
32. Flying W..... 1-9
33. Flying W..... 10-13
34. Flying W..... 14-17
35. Flying W..... Women
36. Flying W..... Sr. Women
37. Flying W..... Sr. Men
38. Flying W..... Men
39. Key Race ..... 1-9
40. Key Race ..... 10-13
41. Key Race ..... 14-17
42. Key Race ..... Women
43. Key Race ..... Sr. Women
44. Key Race ..... Sr. Men
45. Key Race ..... Men
46. Figure Eight Stake ..... 1-9
47. Figure Eight Stake ..... 10-13
48. Figure Eight Stake ..... 14-17
49. Figure Eight Stake ..... Women
50. Figure Eight Stake ..... Sr. Women
51. Figure Eight Stake ..... Sr. Men
52. Figure Eight Stake ..... Men
53. Two Barrel Flag ..... 10-13
54. Two Barrel Flag ..... 14-17
55. Two Barrel Flag ..... Women
56. Two Barrel Flag ..... Sr. Women
57. Two Barrel Flag ..... Sr. Men
58. Two Barrel Flag ..... Men
59. Pair Sack

**All Events Points Only – No Late Entries – No Phone Entries**

\$6 Office Charge (Host club \$5, KWAH \$1) per person will be collected and must accompany early entries.

Please make checks payable to Bull City Roughriders Saddle Club. Mail Early Entries to:  
Shana Guttery, 769 S. 220<sup>th</sup> Avenue, Alton, KS 67623

**Horse pens available at \$10/horse for two day show. Electric hook-ups \$15.00 for two day show.** Early reservations appreciated, otherwise, first come first serve on day of show.

**All dogs must be on leash. Not responsible for accidents.**

### Garden City Wranglers KWA Horse Show

June 28, 2012

Finney County Fairgrounds, Garden City, KS

Entries Close 6:30 PM Show Starts 7:00 PM

KWA Judges: Curtis Peterson, Monique Miller, Linda Sanders, Dak Miller

- |                                |           |                        |           |
|--------------------------------|-----------|------------------------|-----------|
| 1. Western Lead Line.....      | 1-5       | 26. Pole Bending ..... | 1-9       |
| 2. Walk-Trot Horsemanship..... | 1-7       | 27. Pole Bending ..... | 10-13     |
| 3. Bareback Horsemanship ..... | Jr.       | 28. Pole Bending ..... | 14-17     |
| 4. Bareback Horsemanship ..... | Women     | 29. Pole Bending ..... | Sr. Men   |
| 5. Bareback Horsemanship ..... | Sr. Women | 30. Pole Bending ..... | Men       |
| 6. Bareback Tandem .....       |           | 31. Pole Bending ..... | Women     |
| 7. Reining.....                | Jr.       | 32. Pole Bending ..... | Sr. Women |
| 8. Reining.....                | Sr. Men   | 33. Flying W .....     | 1-9       |
| 9. Reining.....                | Men       | 34. Flying W .....     | 10-13     |
| 10. Reining.....               | Women     | 35. Flying W .....     | 14-17     |
| 11. Reining.....               | Sr. Women | 36. Flying W .....     | Sr. Men   |
| 12. Figure 8 Stake .....       | 1-9       | 37. Flying W .....     | Men       |
| 13. Figure 8 Stake .....       | 10-13     | 38. Flying W .....     | Women     |
| 14. Figure 8 Stake .....       | 14-17     | 39. Flying W .....     | Sr. Women |
| 15. Figure 8 Stake .....       | Sr. Men   |                        |           |
| 16. Figure 8 Stake .....       | Men       |                        |           |
| 17. Figure 8 Stake .....       | Women     |                        |           |
| 18. Figure 8 Stake .....       | Sr. Women |                        |           |
| 19. Polo Turn .....            | 1-9       |                        |           |
| 20. Polo Turn .....            | 10-13     |                        |           |
| 21. Polo Turn .....            | 14-17     |                        |           |
| 22. Polo Turn .....            | Sr. Men   |                        |           |
| 23. Polo Turn .....            | Men       |                        |           |
| 24. Polo Turn .....            | Women     |                        |           |
| 25. Polo Turn .....            | Sr. Women |                        |           |

Arena Information: Curtis Peterson 620-271-3941

Linda Sanders 620-214-3251

All Dogs must be on a Leash

Not Responsible for Accidents

Concession Stand on Grounds



### ADDITIONS TO LAST MONTHS LIST OF KWA SADDLE CLUBS

E-Z Riders  
Jan Dumcum  
10629 Carr  
Wichita, KS 67209  
316-655-8326

Outlaw Riders  
Bobbie Schrum  
17565 SE 140 RD  
Norwich, KS 67118  
580-541-7750  
bobbi@olivierranch.com

## DGAS KWA Horse Show

June 30- July 1, 2012

Scott County Fairgrounds, Scott City, KS

KWA Judges: Monique Miller, Dak Miller, Linda Sanders      Office Charge: \$6.00

### Saturday: Entries Close 4:00pm Show Starts 4:30pm

1.	Western Lead Line.....	1-5
2.	Walk-Trot Horsemanship.....	1-7
3.	Horsemanship.....	1-9
4.	Horsemanship.....	10-13
5.	Horsemanship.....	14-17
6.	Western Pleasure.....	Women
7.	Western Pleasure.....	Sr. Women
8.	Western Pleasure.....	Men
9.	Western Pleasure.....	Sr. Men
10.	Queen.....	Jr.
11.	Queen.....	Sr.
12.	Bareback Tandem.....	
13.	Reining.....	Jr.
14.	Reining.....	Men
15.	Reining.....	Sr. Men
16.	Reining.....	Women
17.	Reining.....	Sr. Women
18.	Lead Back.....	1-9
19.	Lead Back.....	10-13
20.	Lead Back.....	14-17
21.	Hay Race.....	Men
22.	Hay Race.....	Sr. Men
23.	Hay Race.....	Women
24.	Hay Race.....	Sr. Women
25.	Saddle & Rescue.....	
26.	Cloverleaf.....	1-9
27.	Cloverleaf.....	10-13
28.	Cloverleaf.....	14-17
29.	Cloverleaf.....	Men
30.	Cloverleaf.....	Sr. Men
31.	Cloverleaf.....	Women
32.	Cloverleaf.....	Sr. Women
33.	Graduated Barrel & Stake.....	1-9
34.	Barrel & Stake.....	10-13
35.	Barrel & Stake.....	14-17
36.	Barrel & Stake.....	Men
37.	Barrel & Stake.....	Sr. Men
38.	Barrel & Stake.....	Women
39.	Barrel & Stake.....	Sr. Women
40.	Straight Barrels.....	1-9
41.	Straight Barrels.....	10-13
42.	Straight Barrels.....	14-17
43.	Straight Barrels.....	Men
44.	Straight Barrels.....	Sr. Men
45.	Straight Barrels.....	Women
46.	Straight Barrels.....	Sr. Women
47.	Two Barrel Flag.....	10-13
48.	Two Barrel Flag.....	14-17
49.	Two Barrel Flag.....	Men
50.	Two Barrel Flag.....	Sr. Men
51.	Two Barrel Flag.....	Women
52.	Two Barrel Flag.....	Sr. Women
53.	Pair Sack.....	
54.	Devil's Cowhide.....	

### Sunday: Entries Close 9:00am Show Starts 9:30am

55.	Rescue Race.....	
56.	Pole Bending.....	1-9
57.	Pole Bending.....	10-13
58.	Pole Bending.....	14-17
59.	Pole Bending.....	Men
60.	Pole Bending.....	Sr. Men
61.	Pole Bending.....	Women
62.	Pole Bending.....	Sr. Women
63.	Key Race.....	1-9
64.	Key Race.....	10-13
65.	Key Race.....	14-17
66.	Key Race.....	Men
67.	Key Race.....	Sr. Men
68.	Key Race.....	Women
69.	Key Race.....	Sr. Women
70.	Flying W.....	1-9
71.	Flying W.....	10-13
72.	Flying W.....	14-17
73.	Flying W.....	Men
74.	Flying W.....	Sr. Men
75.	Flying W.....	Women
76.	Flying W.....	Sr. Women
77.	Half 8 Race.....	1-9
78.	Half 8 Race.....	10-13
79.	Half 8 Race.....	14-17
80.	Half 8 Race.....	Men
81.	Half 8 Race.....	Sr. Men
82.	Half 8 Race.....	Women
83.	Half 8 Race.....	Sr. Women
84.	Figure 8 Stake.....	1-9
85.	Figure 8 Stake.....	10-13
86.	Figure 8 Stake.....	14-17
87.	Figure 8 Stake.....	Men
88.	Figure 8 Stake.....	Sr. Men
89.	Figure 8 Stake.....	Women
90.	Figure 8 Stake.....	Sr. Women
91.	Polo Turn.....	1-9
92.	Polo Turn.....	10-13
93.	Polo Turn.....	14-17
94.	Polo Turn.....	Men
95.	Polo Turn.....	Sr. Men
96.	Polo Turn.....	Women
97.	Polo Turn.....	Sr. Women
98.	Flag Race.....	1-9
99.	Flag Race.....	10-13
100.	Flag Race.....	14-17
101.	Flag Race.....	Men
102.	Flag Race.....	Sr. Men
103.	Flag Race.....	Women
104.	Flag Race.....	Sr. Women
105.	Speed Barrels.....	1-9
106.	Speed Barrels.....	10-13
107.	Speed Barrels.....	14-17
108.	Speed Barrels.....	Men
109.	Speed Barrels.....	Sr. Men
110.	Speed Barrels.....	Women
111.	Speed Barrels.....	Sr. Women
112.	Western Relay.....	

Concession Stand on Ground

All Dogs on Leashes Not Responsible for Accidents

Arena Info: Monique 620-874-0024, Linda 620-214-3251

# Connie Combs

## World Champion Barrel Racing Clinic

Kingman, Kansas

August 25th & 26th, 2012

**One on One  
Instruction!**



**All Levels & All Ages  
Welcome**

**Clinic Covers:**

Barrel Foot Work	Body Soreness
Balance Exercises	Speed Work
Hock Exercises	Pleasure Exercises
Headset	Bits & Equipment

**Learn to take seconds  
off your time!**

**Fees:**

\$350.00

Deposit of \$150.00 due by July 21st

Stalls and camping available

Limited to 15 participants

**For More Information Call:**

Pam Parsons Cell: 316-253-3986

email: parsonsranch@att.net

**Send Payment To:**

Pam Parsons P. O. Box 253

Towanda, Ks. 67144

[www.ConnieCombs.com](http://www.ConnieCombs.com)

# SECRET EFFORT DASH SI 104



First Down Dash SI 105

Fishers Dash SI 94

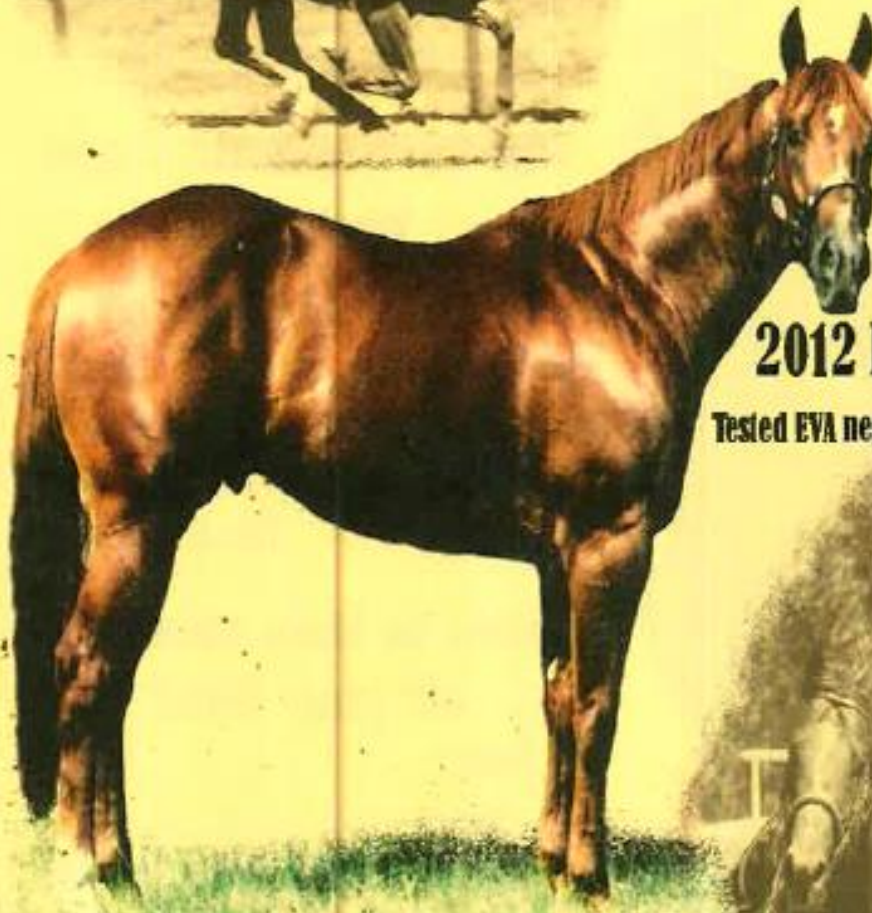
Fishers Favorite SI 98

**Secret Effort Dash SI 104**

Special Effort SI 104

A Special Secret SI 105

Ala Secret Sue SI 106



**2012 Fee: \$1000**

Tested EVA negative and vaccinated



**2011 Prairie Circuit Finals Qualifier**

Standing at:

**FLYING M RANCH**

**Everett and Rochelle Miller**

**11251 Indian Road Scott City, KS 67871**

**(620)872-3900 (620) 214-3736**

Photo courtesy of [www.twodogenterprises.com](http://www.twodogenterprises.com)

Come visit our website at [www.secreteffortdash.homestead.com](http://www.secreteffortdash.homestead.com)